



MILES ESTATE AGENTS

54 Burge Meadow Cotford St. Luke
Taunton TA4 1QN £295,000



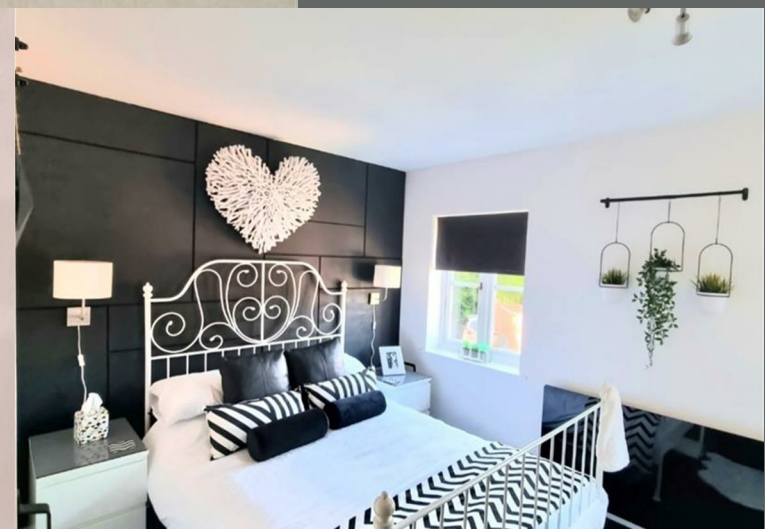
A stylishly upgraded and refitted 3 storey 3 double bedroom townhouse in a lovely position overlooking a small green with mature oak tree in this ever popular village within Kingsmead catchment area, 5 miles North West of Taunton. Superb refitted kitchen/dining/living space, enclosed landscaped garden, garage and parking - early viewing recommended. Freehold Council Tax band D EPC : C





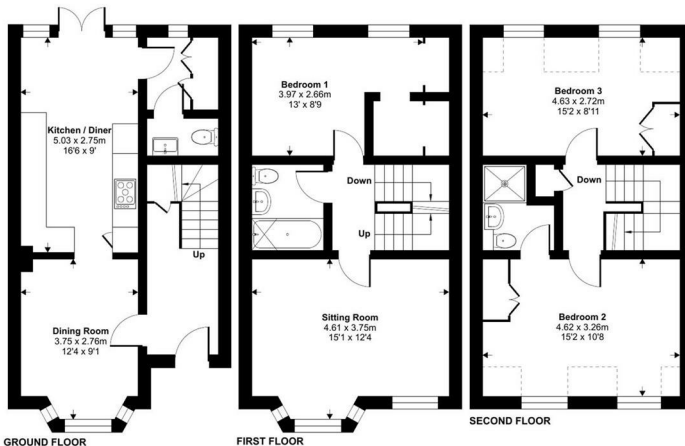
Features:

- Entrance hall
- Superb refitted kitchen/dining/living room
- Utility & cloakroom
- First floor sitting room
- 3 good size double bedrooms
- En suite & family bathroom
- Enclosed landscaped garden
- Single garage & off road parking
- Freehold
- Council Tax Band D
- EPC : C



Burge Meadow, Cotford St. Luke, Taunton, TA4

Approximate Area = 1211 sq ft / 112.5 sq m
Limited Use Area(s) = 42 sq ft / 3.9 sq m
Total = 1253 sq ft / 116.4 sq m
For identification only - Not to scale



GROUND FLOOR
FIRST FLOOR
SECOND FLOOR

Energy Efficiency Rating		
Very energy efficient - lower running costs	Current	Potential
(91-100) A		89
(81-90) B		
(71-80) C	79	
(61-70) D		
(51-60) E		
(41-50) F		
(31-40) G		
Not energy efficient - higher running costs		
England & Wales		EU Directive 2002/91/EC



Viewings strictly through the selling agents:

Miles Estate Agents

2 Piffin Lane, Bishops Lydeard, Taunton,
Somerset, TA4 3AS

Tel: 01823 470 500

lydeard@milesestateagents.co.uk

www.milesestateagents.co.uk



rightmove

OnTheMarket.com

MILES ESTATE AGENTS

BEST
ESTATE AGENT GUIDE
2019 : EXCEPTIONAL
SALES